

Growth, equality & middle class in Finland

Ilkka Haavisto

Research Manager

Finnish Business & Policy Forum EVA



Income groups

High

2.1 x median income or more

Upper middle

1.6–2.0 x median income

Middle-middle

Middle class: 0.76–2.00 x median income

Lower middle

0.76–1.1 x median income

Low

0.75 x median income or less

Year 2016

Income groups

<i>High</i>	4066- €/month
<i>Upper middle</i>	3050-4065 €/month
<i>Middle-middle</i>	2237-3049 €/month
<i>Lower middle</i>	1525-2236 €/month
<i>Low</i>	-1524 €/month

Year 2016

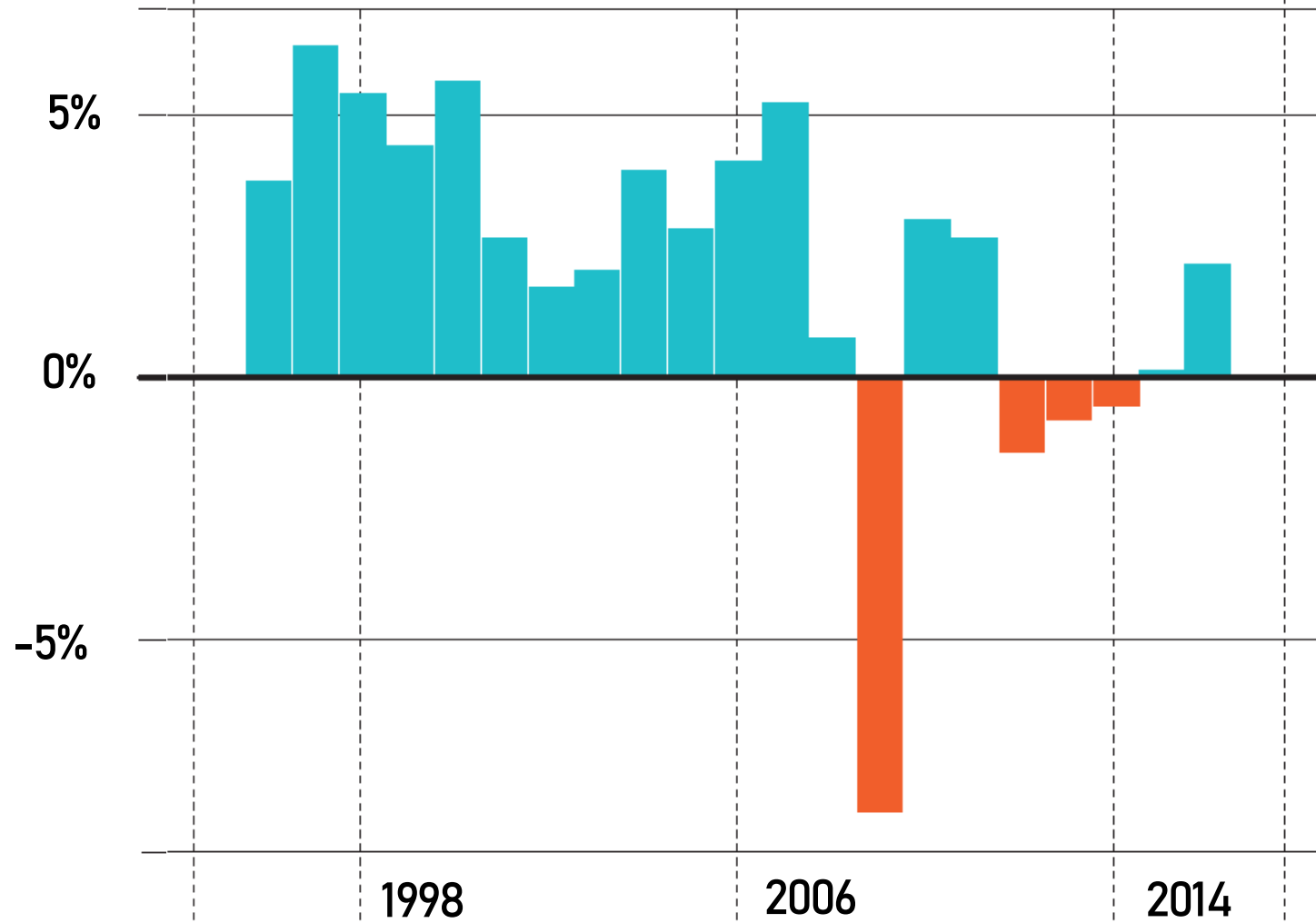
Structure of the Finnish population

Income groups	Number of people	Share of population
<i>High</i>	<i>0.3 mio</i>	5.8%
<i>Upper middle</i>	<i>0.6 mio</i>	10.7%
<i>Middle-middle</i>	<i>1.3 mio</i>	24.5%
<i>Lower middle</i>	<i>1.8 mio</i>	33.1%
<i>Low</i>	<i>1.4 mio</i>	25.9%

Year 2016

GDP change (in %)

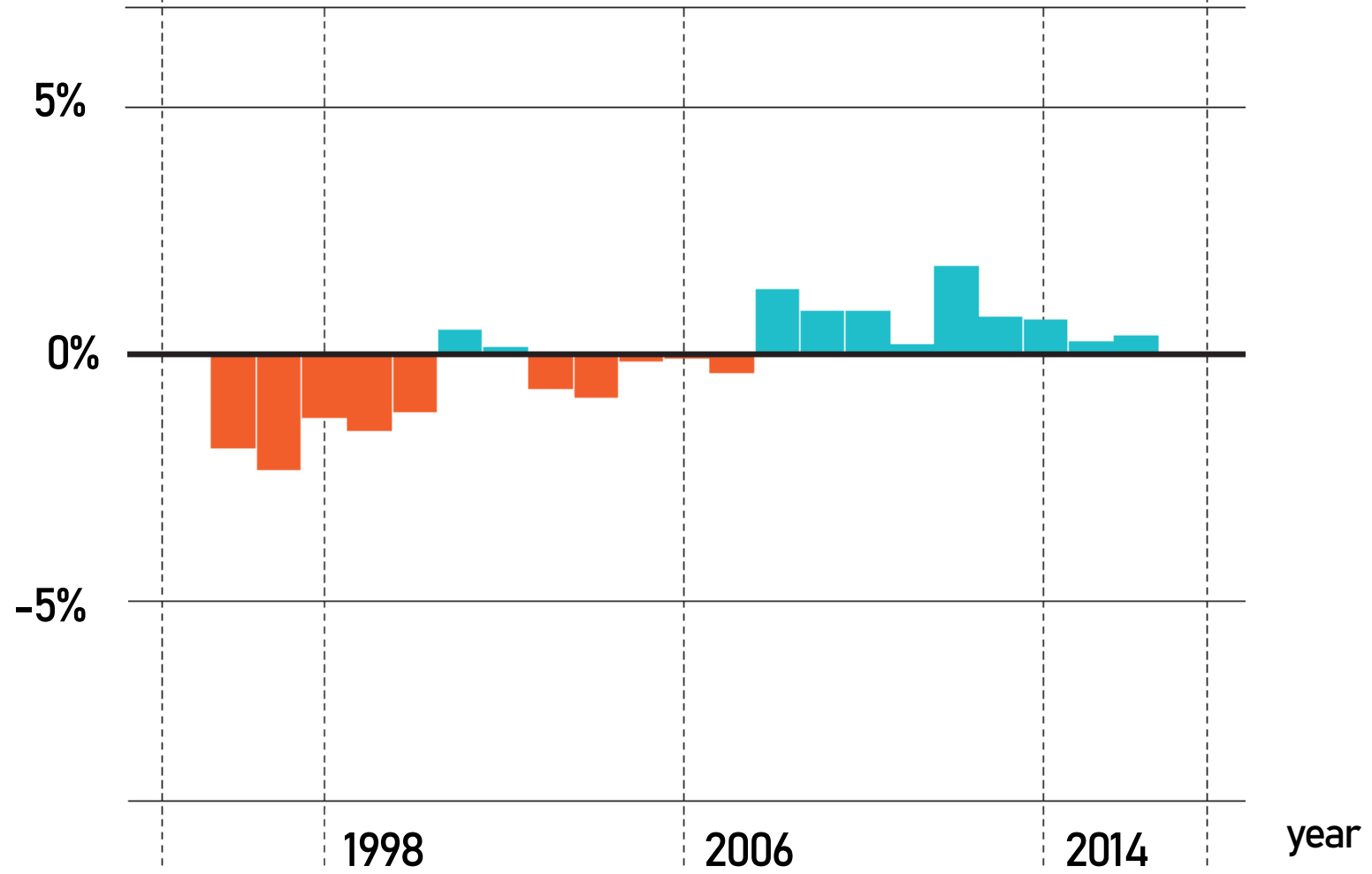
Volume of GDP



source: Statistics Finland

yearly changes
(in %)

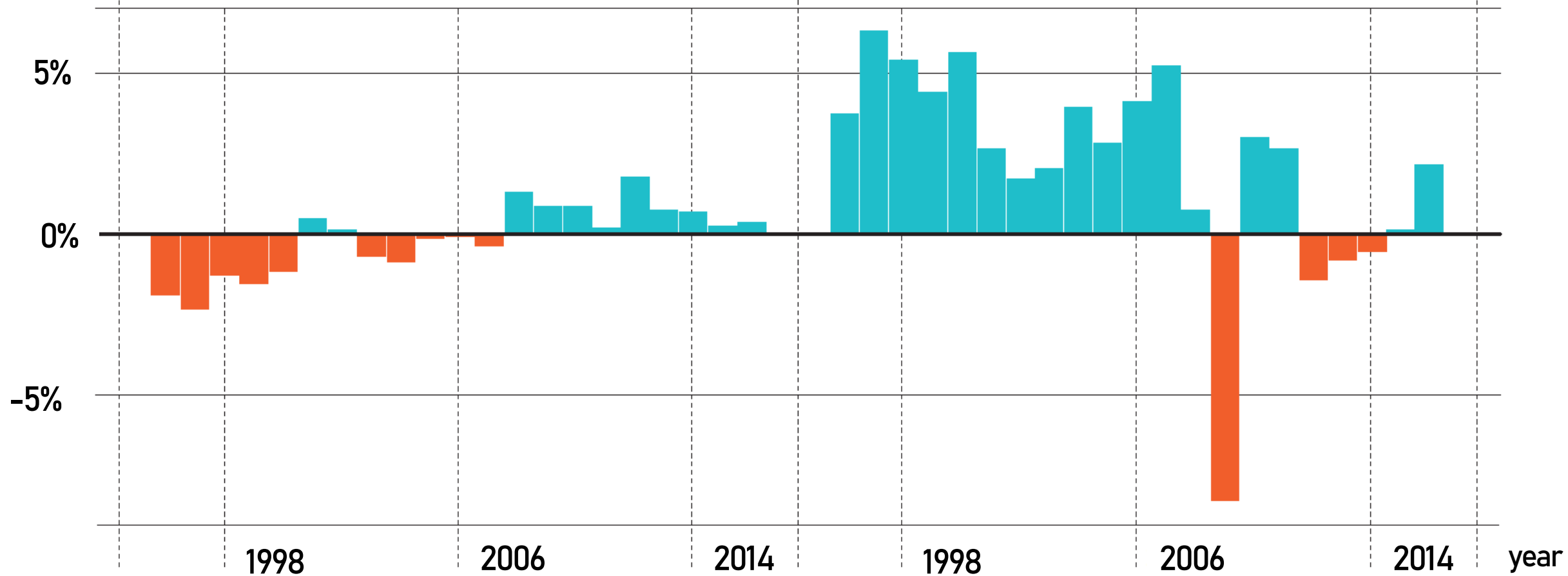
Number of middle-income population



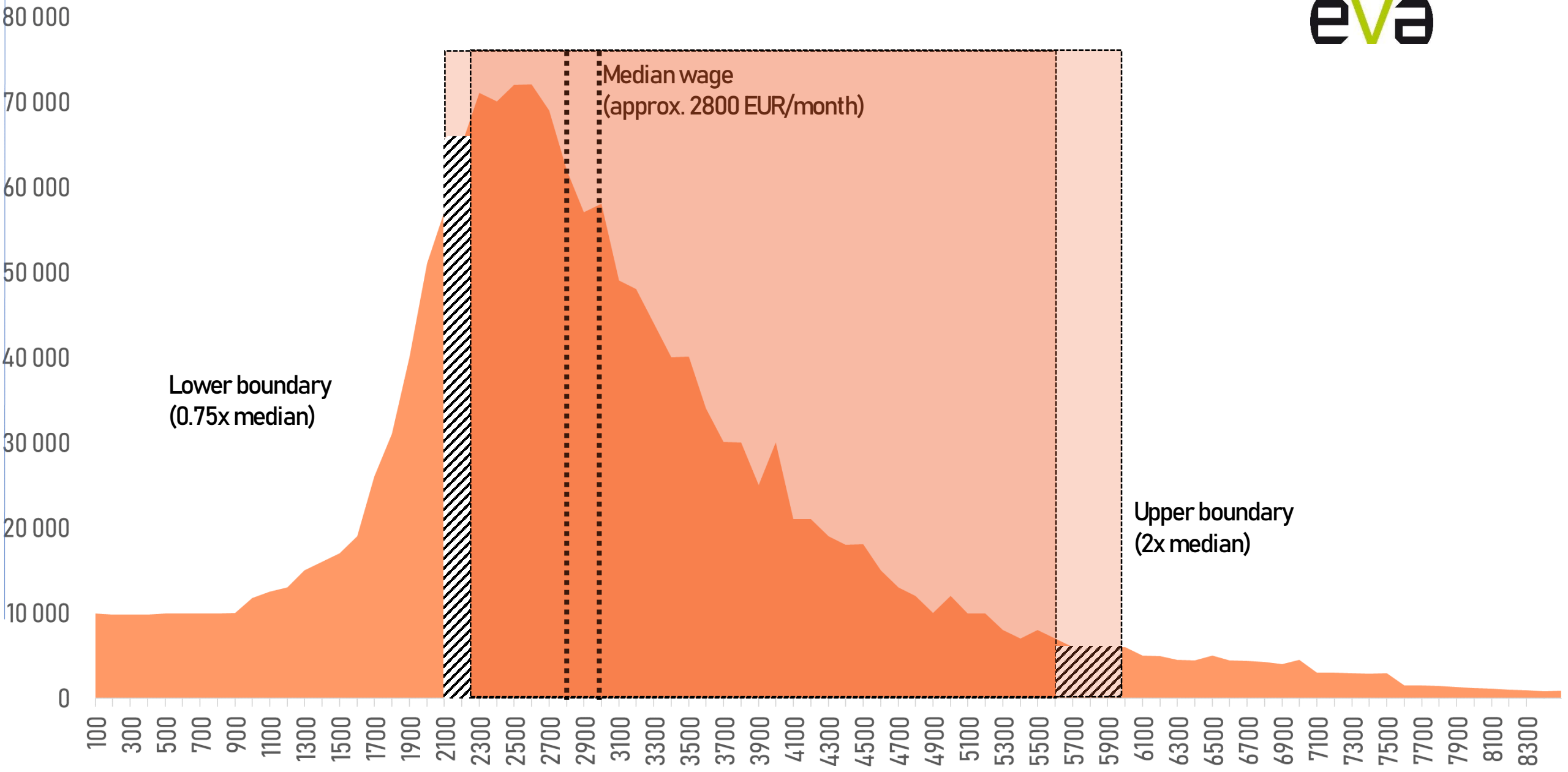
yearly changes
(in %)

Number of middle-income population

Volume of GDP



Number of wage-earners (2017)



Lower boundary
(0.75x median)

Median wage
(approx. 2800 EUR/month)

Upper boundary
(2x median)

Poorer

Middle class

Richer

Income groups	Share on total taxes	Effective income tax rate	Balance between taxes & transfers (in bn EUR)
<i>High</i>	24%	36%	-6
<i>Upper middle</i>	21%	31%	-4
<i>Middle-middle</i>	29%	27%	-2
<i>Lower middle</i>	21%	22%	7
<i>Low</i>	6%	14%	10

Income taxes incl. tax-related payments.

Year 2016